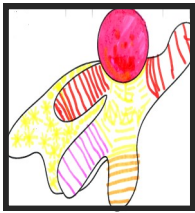


Learning Powers

Throughout the school we use 'Learning powers'. We refer to these in assemblies, continuous play, carpet sessions and adult led learning. The characteristics of learning in the early years link with the learning powers.

The children use the following learning powers everyday.



Co-operation Cop

Children learn to share and co-operate. It helps develop team work and helps them make long lasting friendships.



Captain Curiosity

Children are interested in the world and its surroundings. They investigate things that interest them



Creative Crusader

- ◆ Creative problem solvers
- ◆ Imaginative



Inspector Independent

- ◆ Independent
- ◆ Confident
- ◆ Willing to try



Resilient Ranger

Children are willing to have a go. They may make mistakes but they keep on trying.